

[View this email in your browser](#)



Share



Tweet



Share



Pin



Forward to Friend



© Yousuf Karsh

GENERAL 'LY SPEAKING

Week of August 7, 2017

Dispatches From
The Eisenhower Memorial Commission

Ike's Great-grandson Joins Memorial Advisory Committee



The Commission welcomes the latest member to the Eisenhower Memorial Advisory Committee - Merrill Eisenhower Atwater.

Mr. Atwater currently serves as Director of Aviation for the Kansas State Department of Transportation. He previously served as National Director of

Housby Inc. and President of New Business Development for Fox Energy Corp. We are honored to have Mr. Atwater's support and participation in the memorialization of his great-grandfather.

The [Advisory Committee](#) consists of dozens of distinguished Americans, including all four former U.S. Presidents, who are dedicated to ensuring that a national memorial honoring General and President Eisenhower is constructed in Washington, D.C.



Follow Us



Facebook



Twitter



YouTube



Vimeo

Salute to Ike's Supporters

This week the Commission is delighted to announce receipt of a gift from Martha E. Head at the *General of the Army* giving level.

We extend our deepest appreciation to all of our donors for their generous contributions in support of Ike's memorial. Donations from our supporters make it possible for us to move ever closer to groundbreaking on the National Eisenhower Memorial in the heart of our nation's capital.

Donate now at [Pay.Gov](https://www.pay.gov) to make an online contribution and join the many patriotic Americans, multi-national corporations, foreign nations and elementary school students in honoring this great American, Dwight D. Eisenhower.

All donors are prominently recognized on our [Virtual Donor Wall](#).

Ike's Timeless Legacy

Aloha!

On August 21, 1959, President Eisenhower officially admitted Hawaii as the 50th state of the Union, simultaneously making the Eisenhower White House the first to fly the current flag of the United States. Beginning with his 1952 presidential campaign through his presidency, Eisenhower fought tirelessly to admit Hawaii to the Union.



Then-Representative Inouye (upper right) and other officials look on as President Eisenhower signs the official proclamation admitting Hawaii as the 50th state of the Union, image courtesy of [History.com](https://www.history.com).

 Website

 Email Us

Make a Contribution

Join us in honoring and celebrating Ike's life and legacy by memorializing him in our Nation's capital.

Donate at
[Pay.Gov](https://www.pay.gov)



DWIGHT D. EISENHOWER
MEMORIAL COMMISSION

Commissioners

Sen. Pat Roberts (R-KS),
Chair

Rep. Mike Thompson (D-CA),
Vice Chair

Sen. Joe Manchin (D-WV)

Sen. Gary Peters (D-MI)

Sen. Thad Cochran (R-MS)

Rep. Mac Thornberry (R-TX)

Rep. Mike Simpson (R-ID)

Rep. Sanford Bishop, Jr. (D-GA)

Rocco C. Siciliano,
Chair Emeritus

Susan Banes Harris

Alfred Geduldig

Bruce Cole

Former Commissioners

Sen. Daniel Inouye (D-HI)

Sen. Ted Stevens (R-AK)

Fittingly, it was the late Hawaii Senator and World War II hero, Daniel K. Inouye, who was an original co-sponsor of the legislation that established the Eisenhower Memorial Commission. Serving as the Commission's Vice Chairman from 2001 until his passing in 2012, Senator Inouye championed our mission to build an enduring memorial to the Supreme Allied Commander in World War II and the 34th President. Completing the mission will also be a lasting tribute to Senator Inouye's leadership.



Memorial designer Frank Gehry presenting design concepts to Senator Inouye at the Eisenhower Memorial Commission meeting, 12 July 2011

President Eisenhower's legacy provides hope to all of us -- like him, through education and public service, we, as a nation and individually, can rise to meet any challenge.

Senator Daniel K. Inouye (D-HI), March 15, 2007,
Congressional Record--Senate, Vol. 153, Pt. 5

Test Your Ike'spertise

Trivia Question: Operation Husky, which commenced on July 9 and ended over a month later on August 17, 1943, was the codename for the Allied invasion of what island?

(See answer below)

Presidential Donors (\$5M+)

Citizens of the United States of America

Sen. Bob Bennett (R-UT)
Sen. Jack Reed (D-RI)
Sen. Jerry Moran (R-KS)
Rep. Dennis Moore (D-KS)
Rep. Leonard Boswell (D-IA)
David Eisenhower

Advisory Committee

Honorary Presidential Advisors

Jimmy Carter
George H. W. Bush
Bill Clinton
George W. Bush
Nancy Reagan (1921 - 2016)

Honorary Vice Presidential Advisors

Walter Mondale
Dan Quayle
Al Gore
Dick Cheney

Finance Campaign

Bob Dole, *Chair*
James Baker, III, *Vice Chair*
Chris Dodd, *Vice Chair*

Eisenhower Family Members

David Eisenhower
Anne Eisenhower
Susan Eisenhower
Mary Jean Eisenhower

Advisory Committee Leadership

Commander in Chief Donors (\$1M+)

Anonymous
FedEx Corporation
Honeywell International
Pfizer Inc.
Republic of China (Taiwan)
The Starr Foundation, on behalf of Maurice R. Greenberg

Supreme Commander Donors (\$500,000+)

Stanley and Fiona Druckenmiller
Ken and Elaine Langone
The Viola Foundation

Chief of Staff Donors (\$100,000+)

Lee and Elizabeth Ainslie
Bill and Mary Ann Becker
The Walt Disney Family
C. Boyden Gray
Ambassador Al Hoffman
The Kislak Family Foundation, Inc.
Dan Lufkin
Fred Malek
Stanley Rumbough
Tricia and Frank Saul
Elizabeth & Clarke Swanson

General of the Army Donors (\$50,000+)

The Floyd E. Davis Family Foundation
Martha M. Head
JP Morgan Chase & Co.
Jacqueline B. Mars

Legacy Donors (\$25,000+)

Gen. P. X. Kelley, USMC
(Ret.), *Co-Chair*

Frank Fahrenkopf, *Co-Chair*

Leonard Boswell, *Vice Chair*

Secretaries of State

Henry Kissinger

George Shultz

James Baker, III

Madeleine Albright

General Colin Powell, USA
(Ret.)

Condoleezza Rice

Secretaries of Defense

Donald Rumsfeld

Frank Carlucci

Bob Gates

Leon Panetta

Chuck Hagel

Governors

Sam Brownback

Dirk Kempthorne

Paul Laxalt

Frank Murkowski

Senate Majority Leaders

Tom Daschle

Bill Frist

Trent Lott

George Mitchell

**Former Members of
Congress**

Nancy Kassebaum Baker

Beverly Butcher Byron

Bob Bennett (1933 - 2016)

AIG Foundation

CME Group

Discovery Communications

Ford Motor Company

Kearney Wornall Foundation, on behalf of R. Crosby Kemper

U.S. Sugar Corporation

To view the full list of donors,
visit our [virtual donor wall](#).

Tom Downey

Newt Gingrich

Paul Laxalt

Joe Lieberman

Blanche L. Lincoln

Ray McGrath

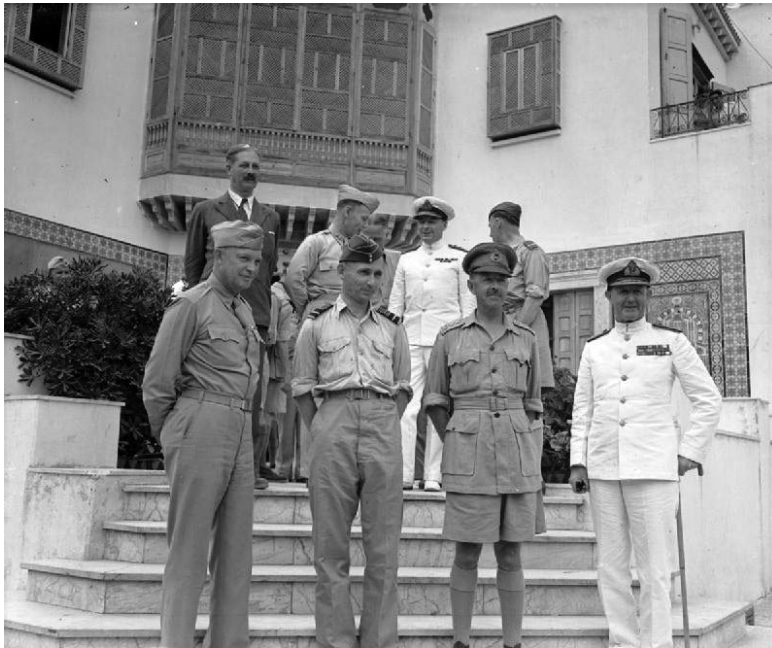
Frank Murkowski

Jim Slattery

Todd Tiahrt

Trivia Answer: Sicily.

Eisenhower commanded the Allied invasion of Sicily, which drove the Axis from the island, re-opened shipping lanes in the Mediterranean and encouraged the fall of Benito Mussolini's government. The successful operation cleared the way for the Allies to move onto the Italian mainland.



*Allied commanders of Operation Husky, Tunis, Tunisia, ca. 1943.
From left: General Dwight Eisenhower, Air Chief Marshal Sir Arthur
Tedder, General Sir Harold Alexander, and Admiral Sir Andrew
Cunningham. Image courtesy of the [Imperial War Museum](#).*

Senior Presidential Officials

David Abshire (1926 - 2014)

Erskine Bowles

Nicholas F. Brady

William Coleman (1920 -
2017)

C. Boyden Gray

Alan Greenspan

Ed Meese

William Webster

Military Leaders

Lt. Gen. Tom McInerney,
USAF (Ret.)

Gen. Richard Myers, USAF
(Ret.)

VAdm. Ann E. Rondeau, USN
(Ret.)

Lt. Gen. Brent Scowcroft,
USAF (Ret.)

Lt. Gen. Richard Trefry, USA
(Ret.)

Leaders of Industry

Hank Greenberg

Fred Malek

T. Boone Pickens, Jr.

Frederick W. Smith

Leaders of Arts & Culture

Tom Brokaw

Harold Burson

Barbaralee Diamonstein-
Spielvogel

Tom Hanks

Norman Lear

Distinguished Americans

John Duke Anthony

Merrill Eisenhower Atwater

Judy Burgess

Gerry Cassidy

Andy Demetriou

Larry Field

Lou Galambos

Jane Gosden

Larry Harlow

Vernon Jordan

David Keene

Tom Korologos

Tom Lorentzen

Frank Luntz

Tim McGivern

Ralph Mecham

Paul O'Day (1935 - 2017)

Roswell B. Perkins

Donald Putnam

Gil Robinson

Matt Schlapp

John Shlaes (1942 - 2015)

Jill Sommers

C. Langhorne Washburn
(1918 - 2011)

Creative Team

Frank O. Gehry,
Memorial Designer

Sergey Eylanbekov, *Sculptor*

Tomas Osinski,
Tapestry Designer

Gehry Partners - AECOM,
Joint Venture

Local Projects, *E-Memorial
Designer*

Roy Rosenzweig Center for
History and New Media,
Teacher Resources Developer

**E-Memorial Content
Committee**

Kim Barbieri

Michael Birkner

George Colburn

Lou Galambos

Daun van Ee

Subject Matter Experts

West Point: Carlo D'Este

D-Day: Adrian Lewis

NATO: Gregory Pedlow

Winning The Presidency:
William Pickett

Waging Peace: Jack Foust
Matlock, Jr.

Little Rock: David Nichols

Space Race: Roger Launius

Legacy Organizations

The American Assembly at
Columbia University

The Eisenhower Institute at
Gettysburg College

The Eisenhower Fellowships

The Dwight D. Eisenhower
Presidential Library and
Museum

The Eisenhower Foundation

People to People International

Partners

Dwight D. Eisenhower
Presidential Library

U.S. National Park Service

U.S. National Archives

You are receiving this email because you or your organization have shown an interest in the Dwight D. Eisenhower National Memorial and related activities.

Our mailing address is:

Dwight D. Eisenhower Memorial Commission
1629 K Street, NW
Suite 801
Washington, DC 20006

[Add us to your address book](#)

Website:

EisenhowerMemorial.gov

[unsubscribe from this list](#) [update subscription preferences](#)